

For Immediate Release

1-8, Uchisaiwaicho 2-chome, Chiyoda-ku, Tokyo 100-8501 Japan  
TEL: (+81)-3-5511-5111  
www.shinseibank.com

(Code: 8303 TSE First Section)

## **Shinsei Bank to Exhibit Art Works at Omotesando Hills Financial Center**

Tokyo (Tuesday, February 6, 2007) – Shinsei Bank, Limited (“Shinsei Bank”) today announced that it will display art works of Mr. Dzine, an American artist, within Omotesando Hills Financial Center which is located on third floor, Dojun Wing of Omotesando Hills from Saturday, February 10, 2007 to mid May, 2007.

Shinsei Bank is aiming to bring the reality of a lifestyle abundant with color to our customers, through the branding concept “Color your life.” To send out this “Color your life” message, art works are on display within Omotesando Hills Financial Center after its opening in May, 2006.

Mr. Dzine's career started in graffiti art, yet the dynamic style that has brought him international acclaim inherits aspects of the movements in post-war American painting such as Abstract Expressionism and Color Field painting. The Bank will exhibit three of his works made of glass beads, acrylic, etc.

### **Outline of the Art Exhibition at Omotesando Hills Financial Center**

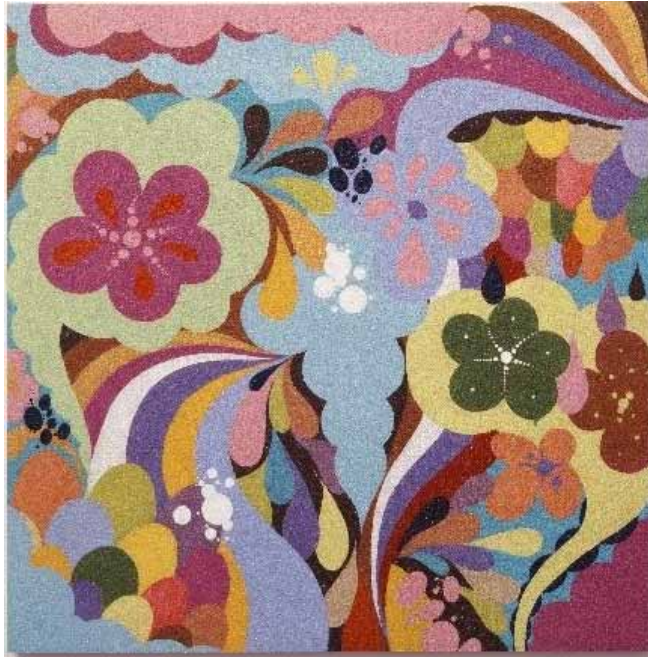
Place: Omotesando Hills, Dojun Wing 3F, 12-10, Jingumae 4-Chome, Shibuya-ku, Tokyo  
Period: Saturday, February 10 through mid May, 2007  
Contents: Exhibition of 3 art works, created by Mr, Dzine, American artist, at Omotesando Hills Financial Center

*Shinsei Bank is a Japanese financial institution providing a full range of financial products and services to both institutional and retail customers based on a three pillar business model comprising Institutional Banking, Consumer and Commercial Finance and Retail Banking. The Bank has total assets of US\$ 92 billion on a consolidated basis and a network of 29 Shinsei Bank branches in Japan (as of December 2006). Shinsei Bank demands uncompromising levels of integrity and transparency in all its activities to earn the trust of customers, staff and shareholders. The Bank is committed to delivering long-term profit growth and increasing value for all its stakeholders.*

News and other information about Shinsei Bank are available at <http://www.shinseibank.com/english/index.html>.

**【Appendix】**

**【Art works of Mr. Dzine planned to be exhibited at Omotesando Hills Financial Center】**



Title: "The Richest Man in Babylon"

2004

Size: 101.6 x 101.6 x 5 cm

Material: Acrylic on canvas on board covered with glass beads



Title: Untitled (study for an electronic symphony)

2006

Size: 30 x 30 cm

Material: Acrylic on canvas on board covered with glass beads



Title: "Optic Study"

2005

Size: Diam. 91.5 cm

Material: Envirotex and acrylic on canvas on board

**【Mr. Dzine's profile】**

Dzine is an up-and-coming painter currently based in Chicago, where he was born in 1970, and is very active internationally.

Strongly influenced by the graffiti art movement in the 1980s when he was still in his teens, Dzine first came to prominence as a young Chicago painter at the start of the 1990s. His work extends past the conventional boundaries of art, and has included numerous collaborations with leading club culture producers and DJs – including DJ Cam, Gotan Project, Yellow Productions, and Guidance Recordings. Encompassing visual art, fashion, and music, Dzine has become one of the

driving forces of youth culture in a broad sense.

In addition to his paintings in graffiti art, the dynamic style that has brought Dine international acclaim inherits aspects of Abstract Expressionism, Color Field painting, and other movements in post-war American painting. Despite his youth, he has established a reputation with curators and collectors worldwide as a pivotal figure who is opening new doors for abstract expression.

In 2002, he produced a nine-meter mural at the Museum of Contemporary Art Chicago as a site-specific installation "Sampler." His first major solo exhibition in Japan was at SCAI the Bathhouse in Tokyo in May 2004. In 2005, his solo exhibition "PUNK FUNK" at the Contemporary Art Museum St. Louis included a massive mural that attracted a great deal of interest. In 2006, his activities included a solo exhibition at the Museum of Art in Puerto Rico, an artist-in-residence program and solo exhibition at the Baltic Centre for Contemporary Art in Newcastle, UK, a massive outdoor installation project in the Netherlands, and another solo exhibition in Tokyo first time in two years. In 2007, Dine's work seems likely to progress further heights, including a project for the Venice Biennale and solo exhibition in Rome.