

DIRECTORS AND EXECUTIVES

As of December 1, 2014

BOARD OF DIRECTORS (6)

Shigeki Toma	Representative Director, President
Yukio Nakamura	Representative Director, Deputy President
J. Christopher Flowers*	Managing Director and Chief Executive Officer, J. C. Flowers & Co. LLC
Ernest M. Higa*	Chairman and Chief Executive Officer, Higa Industries Co., Ltd.
Shigeru Kani*	Former Director, Administration Department, The Bank of Japan, Specially Appointed Professor, Yokohama College of Commerce
Jun Makihara*	Chairman of the Board, Neoteny Co., Ltd.

*Outside Directors

AUDIT & SUPERVISORY BOARD MEMBERS (3)

Shinya Nagata	Audit & Supervisory Board Member
Kozue Shiga*	Lawyer
Ryuichi Tomimura*	Executive Vice President, Director, SIGMAXYZ Inc.

*Outside Audit & Supervisory Board Members

EXECUTIVE OFFICERS (25)

Shigeki Toma	Representative Director, President, Chief Executive Officer
Yukio Nakamura	Representative Director, Deputy President, Chief of Staff, Head of Corporate Staff Group, General Manager, Office of Financing Facilitation Management
Sanjeev Gupta	Senior Managing Executive Officer, Head of Individual Group
Michiyuki Okano	Senior Managing Executive Officer, Group Chief Information Officer, Head of Banking Infrastructure Group
Hitomi Sato	Senior Managing Executive Officer, Head of Institutional Group, General Manager, VBI Promotion Division
Shigeru Tsukamoto	Senior Managing Executive Officer, Chief Financial Officer, Head of Finance Group
Satoshi Koiso	Managing Executive Officer, General Manager, Corporate Planning Division
Yoshiaki Kozano	Managing Executive Officer, Head of Principal Transactions Sub-Group
Hideyuki Kudo	Managing Executive Officer, Chief Risk Officer, Head of Risk Management Group
Toru Myochin	Managing Executive Officer, Executive Officer in charge of Institutional Business, General Manager, Healthcare Finance Division
Hironobu Satou	Managing Executive Officer, Head of Global Markets Group
Shinichirou Seto	Managing Executive Officer, Executive Officer in charge of Institutional Business, Head of Institutional Business Sub-Group
Masashi Yamashita	Managing Executive Officer, Deputy Head of Individual Group, Head of Consumer Finance Sub-Group
Shigeto Yanase	Managing Executive Officer, Executive Officer in charge of Overseas Banking
Akira Hirasawa	Executive Officer, General Manager, Portfolio and Risk Management Division
Yasunobu Kawazoe	Executive Officer, General Manager, Institutional Credit Management Division
Takahisa Komoda	Executive Officer, General Manager, Human Resources Division
Tsukasa Makizumi	Executive Officer, General Manager, Specialty Finance Division, Head of Project Finance Department, Specialty Finance Division
Takako Masai	Executive Officer, Head of Markets Research Department, Markets Sub-Group
Yuji Matsuura	Executive Officer, Head of Markets Sub-Group
Nozomi Moue	Executive Officer, General Manager, Structured Risk Management Division
Masayuki Nankouin	Executive Officer, Head of Financial Control and Accounting Sub-Group
Nobuyasu Nara	Executive Officer, Executive Officer in charge of Institutional Business, General Manager, Osaka Branch
Eiji Shibazaki	Executive Officer, Head of Financial Institutions Sub-Group
Takashi Yoshikawa	Executive Officer, General Manager, Overseas Banking Division, Head of Overseas Business Development Department, Overseas Banking Division

SENIOR ADVISOR (1)

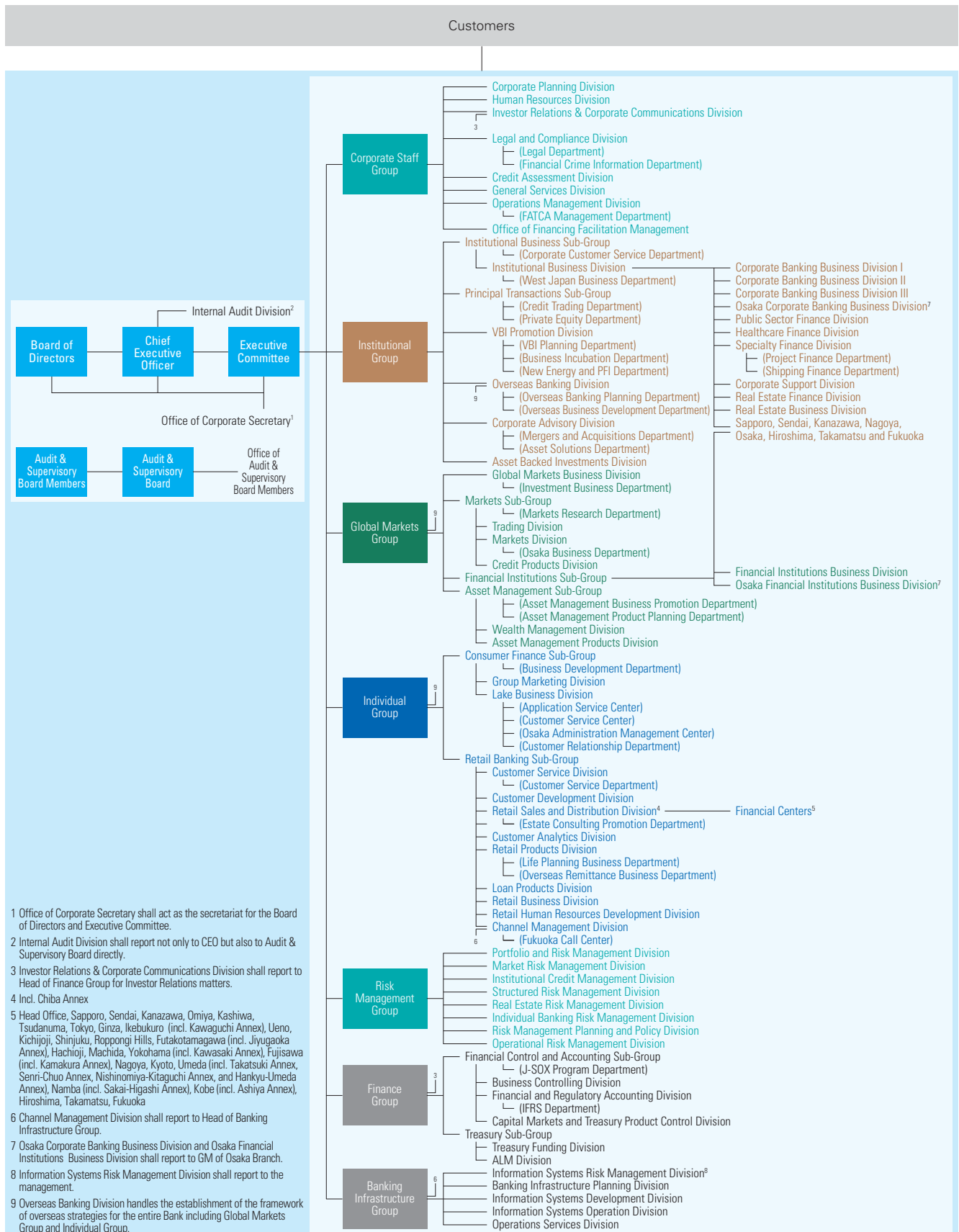
David Morgan	Supervisory Board Member, HSH Nordbank AG, and Managing Director, Europe and Asia-Pacific, J.C. Flowers & Co. UK Ltd
--------------	--

ADVISOR (1)

Yuji Tsushima

ORGANIZATION

As of December 1, 2014



SUMMARY OF MAJOR EVENTS

2000	March	Launched as an innovative Japanese bank under new management and new ownership	
	June	Changed name from The Long-Term Credit Bank of Japan, Limited (LTCB), to Shinsei Bank, Limited	
2001	May	Commenced operations of Shinsei Securities Co., Ltd.	
2003	April	Commenced operations of Shinsei Investment Management Co., Ltd.	
2004	February	Listed the Bank's common shares on the First Section of the Tokyo Stock Exchange	
	April	Converted the Bank's long-term credit bank charter to an ordinary bank charter	
	May	Achieved one million retail accounts	
	September	Acquired a controlling interest in APLUS Co., Ltd.	
2005	March	Acquired a controlling interest in Showa Leasing Co., Ltd.	
	May	Commenced operations of Shinsei International Limited	
2006	July	Commenced resolution of public funds	
2007	April	Achieved two million retail accounts	
	December	Acquired a controlling interest in SHINKI Co., Ltd.	
2008	January	Reached a mutual agreement with Seven Bank, Ltd. to share sales channels and develop products and services together	
	February	Completed a tender offer bid for the Bank's common shares and a third-party allotment of new common shares of the Bank to the investor group led by J.C. Flowers & Co. LLC and affiliates	
	September	Acquired GE Consumer Finance Co., Ltd. (Changed company name to Shinsei Financial Co., Ltd. on April 1, 2009)	
2009	January	Launched <i>Shinsei Step Up Program</i>	
	March	Concluded tender offer for the shares of common stock of SHINKI Co., Ltd.	
	June	Opened first Shinsei Consulting Spots Launched <i>Two Weeks Maturity Deposit</i>	
2010	June	Moved to a "Company with Board of Statutory Auditors" board model	
	November	Announced business alliance with YES BANK LIMITED in Japan-India cross-border M&A business	
2011	January	Commenced operations at new head office (Nihonbashi Muromachi)	
	March	Issued new shares through international common share offering	
	September	Assisted The Daito Bank, Ltd. in arranging its first syndicated loan	
	October	Commenced unsecured personal card loan service under the Lake brand	
2012	March	Established VBI Promotion Division in the Institutional Group	
	April	Added "Shinsei APLUS Gold Card" and "Shinsei APLUS Card" to credit card line-up	
	July	Established venture fund targeting mobile entertainment companies with gumi Inc.	
	September	Balance of <i>PowerSmart</i> Home Mortgages exceeded one trillion yen	
	October		Invested in "Fukushima Growth Industry Development Fund"
			Issued Fourth Series of Unsecured Callable Subordinated Bonds
November	Provided nonrecourse loan for construction of lodgings for post-earthquake reconstruction workers in Miyagi Prefecture		

Financial Highlights	2013 January	Participated in establishment of "Tokutei Mokuteki Gaisha Healthcare Infra Fund Kobe," which is privately placed real estate fund for individual investors where healthcare facilities constitute the underlying investment assets
	March	Started <i>Go Remit Overseas Remittance Service</i>
		Syndicated project finance for mega solar project in the Eastern area of Hokkaido
	April	Stopped issuing long-term credit debentures (public sales issues) and long-term credit debentures for workers' property accumulation (<i>Zaikei issue</i>)
		Established "Femto Growth Capital Investment Business Limited Liability Partnership" to invest in and provide support to early-stage companies in Japan's Internet sector
		Provided nonrecourse loan for special purpose company set up by Singapore-based Healthway Medical Development to purchase healthcare facilities in Japan
	May	Arranged project finance for the construction of large-scale solar power plants in Mito city and Shiro-sato town in Ibaraki prefecture
		Issued unsecured callable subordinated bonds to retail investors in Japan
	June	Changed Shinsei Step Up Program to further improve convenience for the Shinsei Bank Group's unsecured card loan and credit card customers
		Formed a business alliance with Culture Convenience Club Co., Ltd. to award T Points to users of Shinsei Bank's financial services
	July	Formed Shinsei Principal Investments Group
		Initiated a pilot project aimed at discovering and nurturing "Innovators" in collaboration with Nomura Research Institute, Inc.
August	Relocated the Osaka Branch in order to enhance business functions	
	Arranged project financing for a mega solar project in Koshimizu, Shari District, Hokkaido Prefecture	
September	Participated in a syndicated loan to a wood biomass power generation and wood pellet manufacturing business	
October	Invested in Private Finance Initiative Promotion of Japan (public-private infrastructure fund)	
	Entered ATM partnerships with "VIEW ALTTE" ATM, operated by East Japan Railway Company, and major convenience store chains such as LAWSON and FamilyMart	
November	Arranged project finance for mega solar business in Kikugawa City, Shizuoka Prefecture	
December	Issued Sixth Series of Unsecured Callable Subordinated Bonds to Retail Investors	
Review of Operations	2014 January	Launched " <i>PowerSmart Home Mortgage Anshin Pack W</i> "
	February	Arranged project finance for mega solar business in Kokonoemachi, Kusu-gun, Oita Prefecture
		Commenced smartphone banking services through Shinsei <i>PowerDirect</i>
		Reached agreement to conclude the indemnity for losses on interest repayment with GE Japan Corporation
	March	Participated in business revitalization support project using a debt-equity swap by Japan Finance Corporation
		Entered business partnership agreement on business succession support with Shinkin Central Bank
		Launched account opening application for smartphones
		Concluded a business alliance agreement concerning business development support for small- and medium-sized enterprises entering into countries belonging to the Association of Southeast Asian Nations (ASEAN) with Forval Corporation
	April	Entered into business alliance with Military Commercial Joint-Stock Bank, a major private commercial bank in Vietnam
		Terminated new loan transactions that utilize the long-term prime rate as the base rate
		Extended new line of credit to wind power plant operation project in Sakata, Yamagata Prefecture
	May	Arranged project finance for mega solar projects in seven locations in Japan utilizing trust schemes
Established Japan Senior Living Partners Co., Ltd., a REIT asset management company aimed at founding a healthcare REIT		
Launched NISA Plus, an investment trust application program		
July	Issued terms for First Series of Unsecured Corporate Bonds (with Inter-Bond Pari Passu Clause)	
	Arranged project finance for mega solar projects in Nasushiobara-shi, Tochigi Prefecture	
	Arranged project finance for mega solar projects in Atsuma-cho, Hokkaido	
September	Arranged project finance for mega solar projects in Hikari-shi, Yamaguchi Prefecture	
October	Started home mortgage campaign to support reconstruction efforts following the Great East Japan Earthquake	